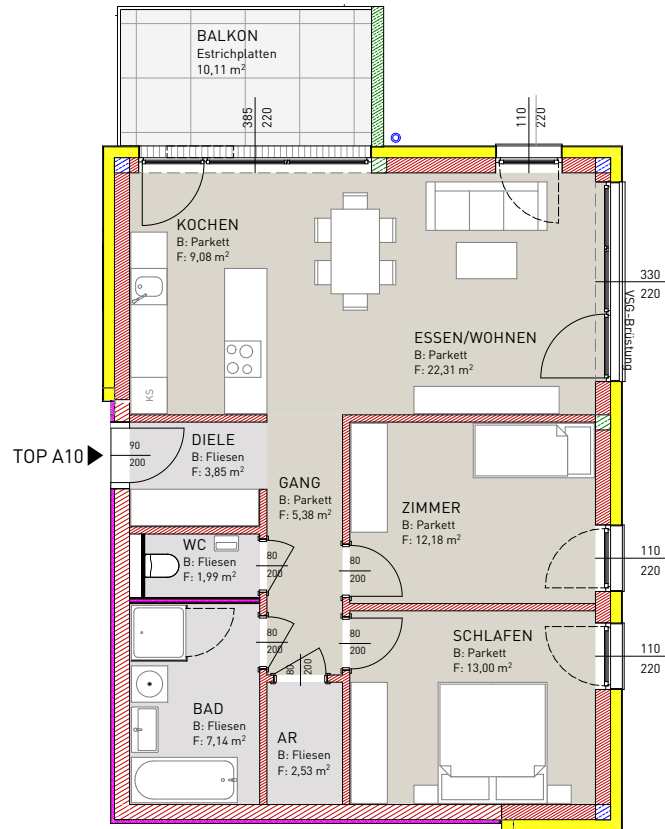
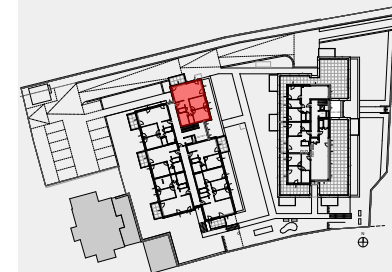


BT A - TOP A10 - 2. OBERGESCHOSS



AR	2,53 m ²
BAD	7,14 m ²
DIELE	3,85 m ²
ESSEN/WOHNEN	22,31 m ²
GANG	5,38 m ²
KOCHEN	9,08 m ²
WC	1,99 m ²
ZIMMER	12,18 m ²
SCHLAFEN	13,00 m ²
SUMME	77,46 m²

BALKON	10,11 m ²
--------	----------------------



ÜBERSICHT (ohne Massstab)