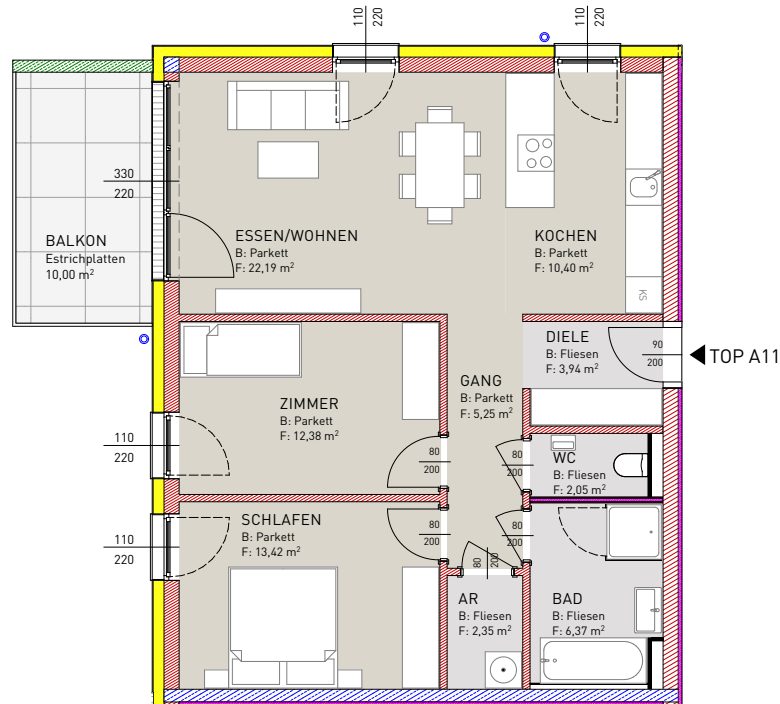
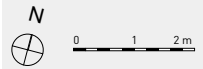


BT A - TOP A11 - 2. OBERGESCHOSS



AR	2,35 m ²
BAD	6,37 m ²
DIELE	3,94 m ²
ESSEN/WOHNEN	22,19 m ²
GANG	5,25 m ²
KOCHEN	10,4 m ²
WC	2,05 m ²
ZIMMER	12,38 m ²
SCHLAFEN	13,42 m ²
SUMME	78,35 m²

BALKON 10,00 m²



ÜBERSICHT (ohne Massstab)