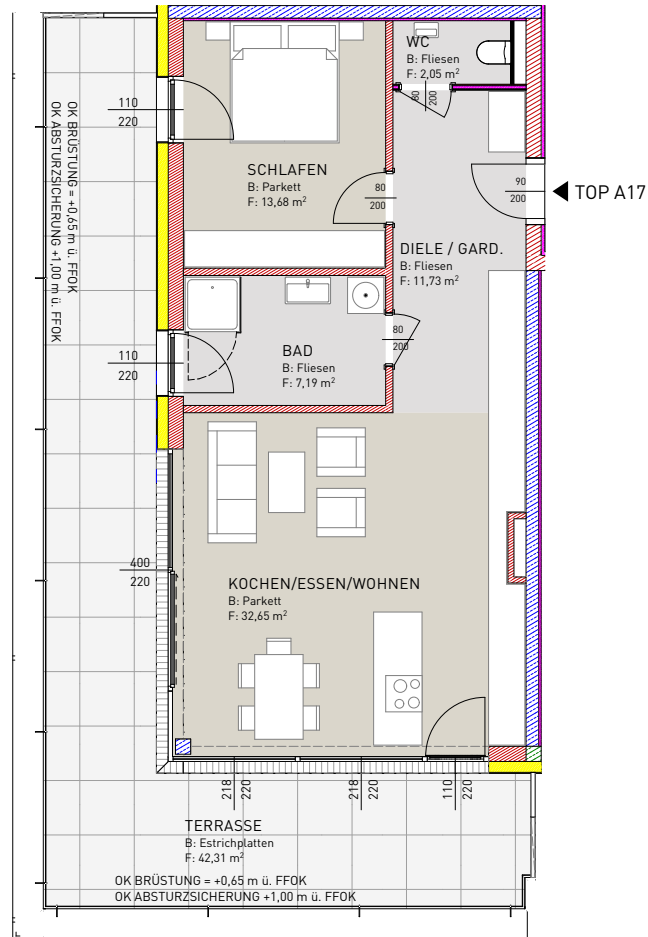
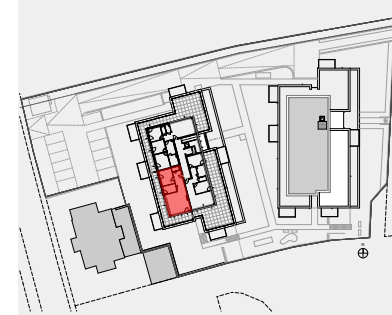


BT A - TOP A17 - 3. OBERGESCHOSS



BAD	7,19 m ²
DIELE / GARD.	11,73 m ²
KOCHEN/ESSEN/WOHNEN	32,65 m ²
WC	2,05 m ²
SCHLAFEN	13,68 m ²
SUMME	67,30 m²

TERRASSE 42,31 m²



ÜBERSICHT (ohne Massstab)