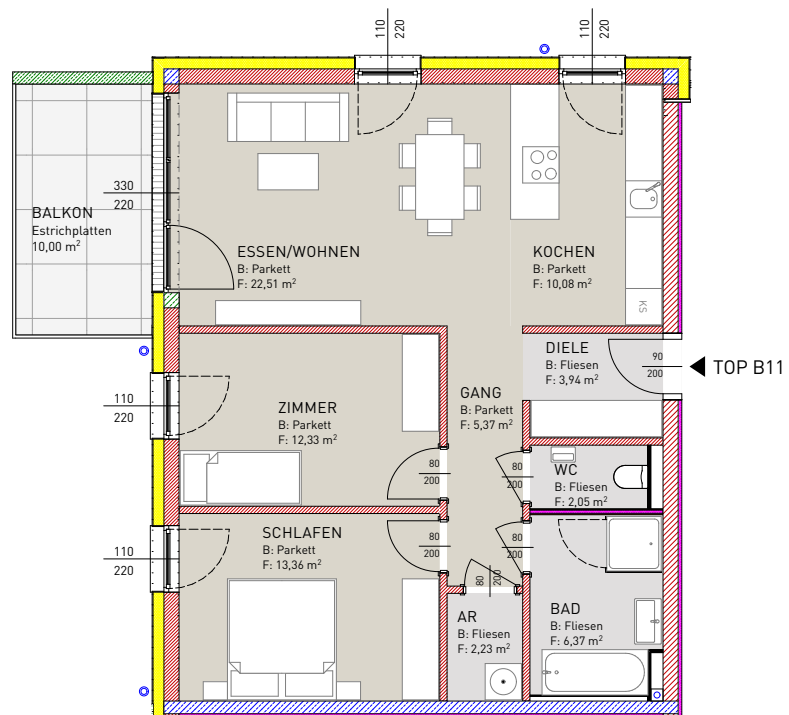
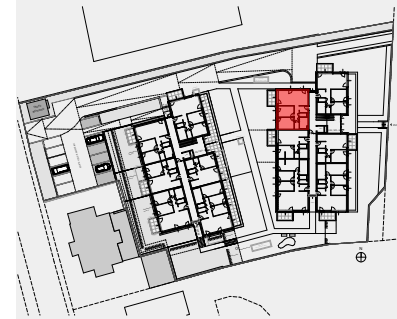
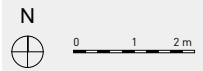


# BT B - TOP B11 - 2. OBERGESCHOSS



AR	2,23 m <sup>2</sup>
BAD	6,37 m <sup>2</sup>
DIELE	3,94 m <sup>2</sup>
ESSEN/WOHNEN	22,51 m <sup>2</sup>
GANG	5,37 m <sup>2</sup>
KOCHEN	10,08 m <sup>2</sup>
WC	2,05 m <sup>2</sup>
ZIMMER	12,33 m <sup>2</sup>
SCHLAFEN	13,36 m <sup>2</sup>
<b>SUMME</b>	<b>78,24 m<sup>2</sup></b>

BALKON 10,00 m<sup>2</sup>



ÜBERSICHT (ohne Massstab)