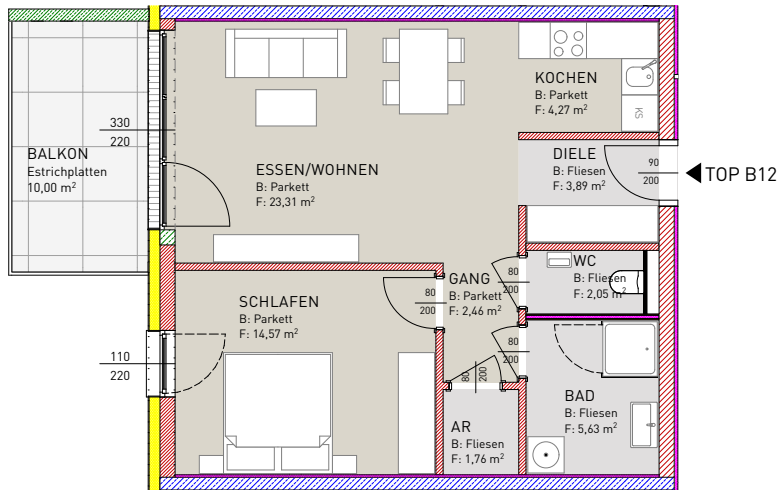
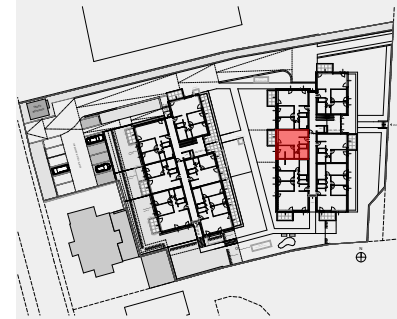


# BT B - TOP B12 - 2. OBERGESCHOSS



AR	1,76 m <sup>2</sup>
BAD	5,63 m <sup>2</sup>
DIELE	3,89 m <sup>2</sup>
ESSEN/WOHNEN	23,31 m <sup>2</sup>
GANG	2,46 m <sup>2</sup>
KOCHEN	4,27 m <sup>2</sup>
WC	2,05 m <sup>2</sup>
SCHLAFEN	14,57 m <sup>2</sup>
<b>SUMME</b>	<b>57,94 m<sup>2</sup></b>

BALKON 10,00 m<sup>2</sup>



ÜBERSICHT (ohne Massstab)